

# SPECIFICATION FOR APPROVAL

REF :

PAGE: 1

PROD. NAME	WIDE BAND CHOKE	ABC'S DWG NO.	WB0610□□□□L□
		ABC'S ITEM NO.	

### I . CONFIGURATION & DIMENSIONS :

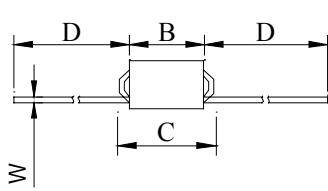


Fig : A

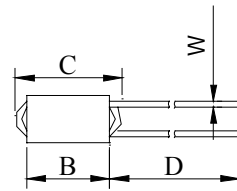


Fig : D

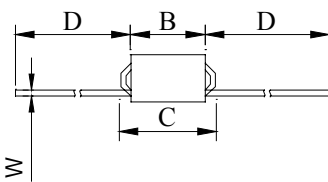


Fig : B

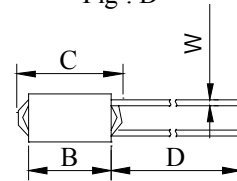


Fig : E

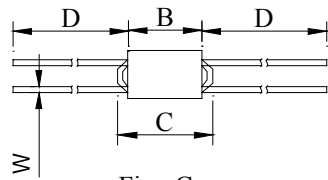
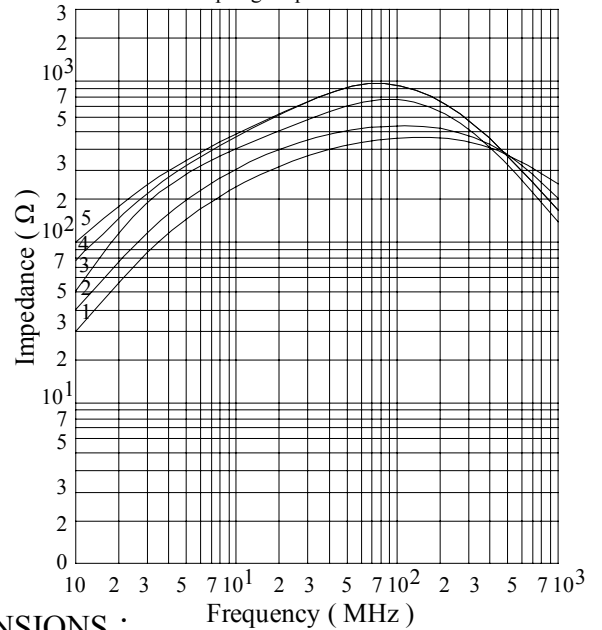


Fig : C



### V . IMPEDANCE CURVE :

Test Instrument : Rf Impedance Analyzer HP4191A  
Test Fixture : Spring Clipfixture HP16092A



### II . MATERIALS :

- a . Core : Ferrite R6H core
- b . Wire : Tinned copper wire (100% Sn)
- c . Remark : lead content 200ppm max. include ferrite

### III . GENERAL SPECIFICATION :

- a . Storage temp. : -40°C ---- +105°C
- b . Operating temp. : -40°C ---- +105°C

### IV . ELECTRICAL CHARACTERISTICS & DIMENSIONS :

DWG No.	Z (Ω) min.	Test Freq. (MHz)	Dimension ( m/m ).					Number of Turn	Fig.
			A±0.5	B±0.5	C +0	D±5	W \$ ±0.05		
WB0610301YL□	300	120	6.0	10	14	40	0.57 \$	1.5	A
WB0610451YL□	450	90	6.0	10	14	20	0.57 \$	2.0	D
WB0610601YL□	600	50	6.0	10	14	40	0.57 \$	2.5	B
WB0610721YL□	720	80	6.0	10	14	20	0.57 \$	3.0	E
WB0610701YL□	700	50	6.0	10	14	40	0.57 \$	1.5+1.5	C

- 1). □ : Packging information...  $\overline{A}$  Bulk
- 2). Test equipment : RD impedance analyger HP4291A
- 3). Test fixture : Spring clip fixture HP16093A

AE-001A

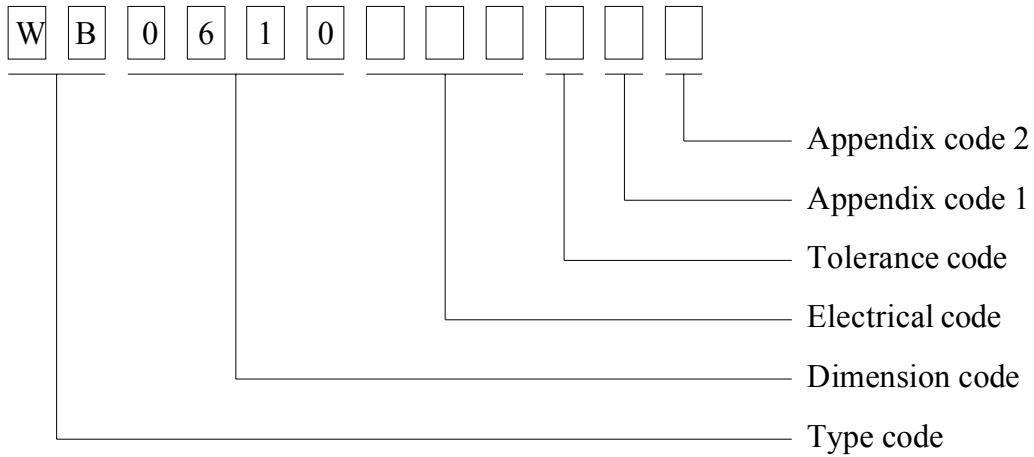
# SPECIFICATION FOR APPROVAL

REF :

PAGE: 2

PROD. NAME	WIDE BAND CHOKE	ABC'S DWG NO.	WB0610□□□□L□
		ABC'S ITEM NO.	

VI . DWG EXPRESSION :



Appendix code 1 : S : Standard products

A~K , M~R , T~Z : Special products

L : Standard Lead Free products

1 ~ 9 : Special Lead Free products

Appendix code 2 :

Code	Inner package	Inner package Q'TY	Remark
A	Box	200 pcs	
B	Bag	1000 pcs	

AE-001A

